

**BUSINESS INDICATORS**AUSTRALIAN
CAPITAL
TERRITORY

EMBARGO: 11:30AM (CANBERRA TIME) FRI 22 JUNE 2001

C O N T E N T S

	<i>page</i>
Notes	2
Summary of findings	3
Selected business indicators	5
FEATURE ARTICLE	
Cleaning Services Industry in the ACT	7
TABLES	
1 Business indicators	8
2 ACT in relation to the rest of Australia	11
3 ACT in relation to the rest of Australia — percentage changes	12
INFORMATION	
Index of Feature Articles published in ACT Business Indicators	13

- For further information about these and related statistics, contact Nives Marelic on Canberra 02 6207 0315, or the National Information Service on 1300 135 070.

NOTES

FORTHCOMING ISSUES

<i>ISSUE</i>	<i>RELEASE DATE</i>
July 2001	20 July 2001
August 2001	17 August 2001
September 2001	21 September 2001

DATA CHANGES

ABS statistical series are being impacted to varying degrees as a result of The New Tax System (TNTS), introduced in Australia from 1 July 2000. TNTS includes the removal of Wholesale Sales Tax and the introduction of a Goods and Services Tax (GST).

IMPACT OF THE NEW TAX SYSTEM ON DATA SERIES IN THIS PUBLICATION

Users of Building Approvals data should exercise caution when analysing movements in the value series over the next few months as they have been affected in a number of ways. For further information see *Building Approvals, Australia* (Cat. no. 8731.0).

Users of Capital Expenditure data should exercise caution when analysing estimates of expected expenditure for 2000–01 financial year. Businesses in the Survey of New Capital Expenditure have been asked to report expected expenditure for 2000–01 financial year based on the cost to them under TNTS. For further information see *Private New Capital Expenditure, State Estimates* (Cat. no. 5646.0).

Users of Retail data should exercise caution when analysing movements in the series over time. Estimates of retail turnover in both original and seasonally adjusted terms reflect unusually large spending ahead of the GST. The trend series attempts to measure underlying behaviour and, in the short term, this measurement may be adversely affected by an unusual influence in the original and seasonally adjusted data. For further information see *Retail Trade, Australia* (Cat. no. 8501.0).

SYMBOLS AND OTHER USAGES

no.	number
n.a.	not available
n.p.	not available for publication
qtr	quarter
'000	thousands
%	per cent
. .	not applicable
*	Represents data with a standard error of greater than 25%
**	Represents data with a standard error of greater than 50%
—	Caution should be exercised when using this data.
—	nil or rounded to zero

Tracy Stewart
Regional Director, Australian Capital Territory

SUMMARY OF FINDINGS

UPDATED SERIES

Series updated since the May 2001 issue are: average weekly earnings, building approvals, established house price index, housing finance, labour force, new motor vehicle registrations, population, retail turnover, state accounts and wage cost index.

The feature article this month, on page 7, is Cleaning Services Industry in the ACT.

Population The estimated resident population of the ACT at December 2000 was 312,400, an increase of 2,400 people from December 1999 and an increase of 800 people from September 2000. This corresponds to an annual growth rate of 0.8%, compared with an increase of 0.5% for the 12 months to December 1999. In contrast the growth rate for Australia was 1.2% during the 12 months ending December 2000. At December 2000 the population of the ACT made up 2% of Australia's population.

Labour force At May 2001, ACT trend employment fell slightly, down 0.2% from April 2001 to 167,200 people, while nationally trend employment rose by 0.1% for the same period to 9,149,000 people.

The trend estimate of unemployed people in the ACT during May 2001 increased to 9,500, up 4% compared with the previous month and up 11% from May 2000. Nationally, trend unemployment rose from April 2001 to 669,100 people.

Compared to April 2001, the trend unemployment rate for the ACT increased by 0.2 percentage point to 5.4% in May 2001. The national trend unemployment rate increased by 0.1 percentage point for the same period to 6.8%.

The ACT trend participation rate for May 2001 remained the same as the previous month (72.5%), while the national participation rate rose by 0.1 percentage point to 63.8%.

Housing finance The trend number of dwelling units financed (including refinancing) in the ACT in April 2001 was 734, a rise of 0.3% from the previous month. The trend estimate for the value of commitments in the ACT was \$99 million, a rise of 1% from March 2001 and a fall of 15% from April 2000.

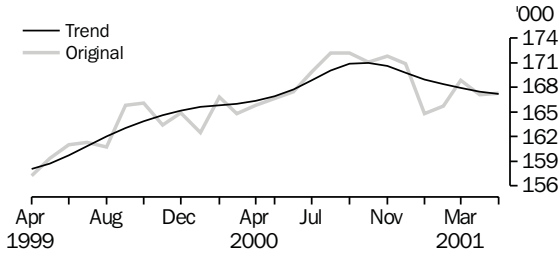
Nationally, the trend number of dwelling units financed (including refinancing) during April 2001 was 47,130 compared with 46,716 in March 2001, while the trend estimate for the value of commitments in April 2001 increased to \$6,691 million (3%) from the previous month.

Established house price index The established house price index for the ACT during the March quarter 2001 rose by 3% from the previous quarter and was up 8% from the same period last year. Nationally, the established house price index rose 2% from the previous quarter and was up 7% from the March quarter 2000.

Building approvals	<p>In April 2001 the trend number of dwelling units approved in the ACT fell to 104, down 7% from the previous month, and a fall of 42% from April 2000. Nationally, the trend number of dwelling units approved in April 2001 fell 1% from the previous month to 9,583 dwelling units.</p> <p>The value of non-residential building approvals for the ACT in April 2001 was \$20 million. The value of total building approvals in April 2001 was \$38 million, up 13% from the previous month and a decrease of 16% from April 2000. Nationally, the value of total building approvals in April 2001 was \$2,567 million, a fall of 12% from the previous month and a fall of 14% from April 2000.</p>
Wage cost index	<p>The public sector wage cost index in the ACT for the March quarter 2001 increased 0.8% from the previous quarter, and 4% from the March quarter 2000 to 110.0. The private sector wage cost index also increased by 0.8% from the December quarter 2000 and 4% from the March quarter 2000, to 111.6. Nationally, the total wage cost index increased 1% from the previous quarter and 4% from the March quarter 2000, to 111.7.</p>
Average weekly earnings	<p>Trend full-time adult ordinary time earnings in the ACT was \$937.80 in February 2001, an increase of \$6.40 (0.7%) from November 2000.</p>
Retail turnover	<p>Trend retail turnover in the ACT for April 2001 was \$277 million, an increase of 1% compared to the previous month. Turnover for April 2001 increased 16% from the April 2000 turnover of \$240 million. Nationally, trend retail turnover also increased by 1% compared to the previous month and was up 10% from the previous year.</p>
State accounts	<p>In the ACT, the trend state final demand, chain volume measure, fell by 0.7% to \$4,696 million in March quarter 2001, compared with \$4,729 million in the December quarter 2000. Nationally, trend domestic final demand, chain volume measure, rose 0.2% compared with December quarter 2000, and remained steady from the March quarter 2000.</p>
New motor vehicle registrations	<p>At April 2001 the trend estimate for ACT new motor vehicle registrations rose slightly to 1,177. Compared to April 2000, this was a rise of 5%. Nationally, the trend for total new motor vehicle registrations fell by 1% from the previous month and was up 5% from April 2000.</p>

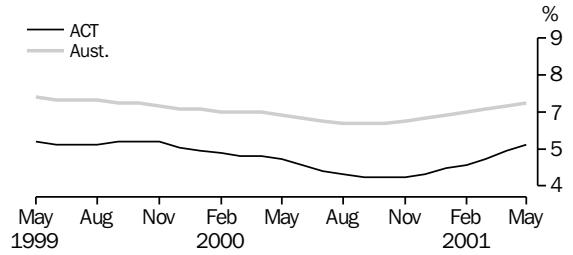
SELECTED BUSINESS INDICATORS

EMPLOYED PERSONS



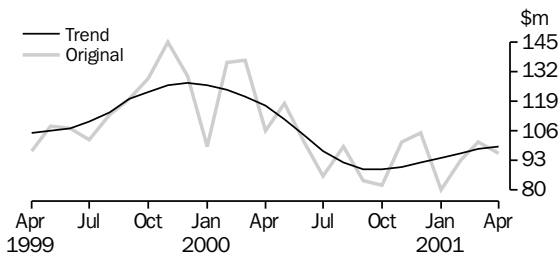
Source: Labour Force, Australia (Cat. no. 6202.0).

UNEMPLOYMENT RATE: trend series



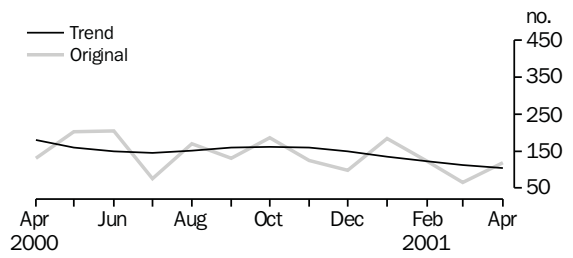
Source: Labour Force, Australia (Cat. no. 6202.0).

HOUSING FINANCE



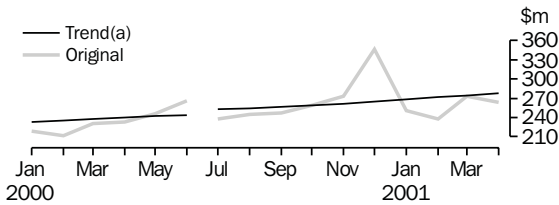
Source: Housing Finance, Australia (Cat. no. 5609.0).

BUILDING APPROVALS: Dwelling units approved



Source: Building Approvals, Australia (Cat. no. 8731.0).

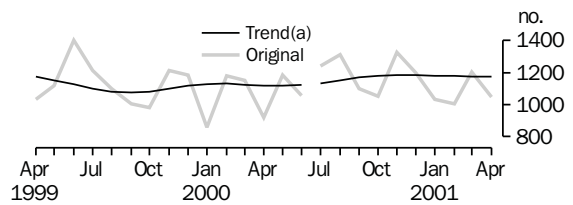
RETAIL TRADE: Monthly turnover



(a) A break in the trend series occurred between June and July 2000 because of the impact of The New Tax System.

Source: Retail Trade, Australia (Cat. no. 8501.0).

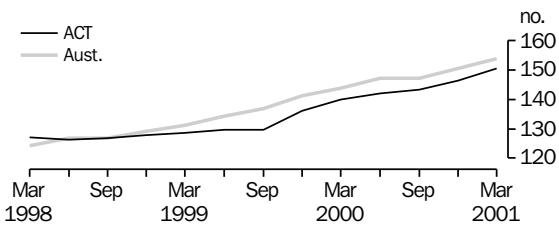
NEW MOTOR VEHICLE REGISTRATIONS



(a) A break in the trend series occurred between June and July 2000 because of the impact of The New Tax System.

Source: New Motor Vehicle Registrations, Australia (Cat. no. 9301.0).

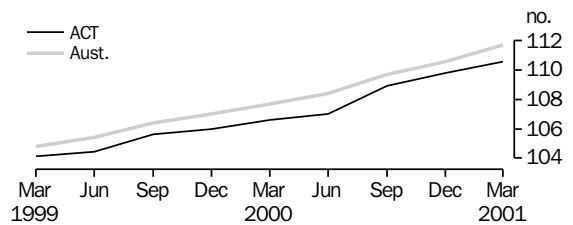
ESTABLISHED HOUSE PRICE INDEX



Base of index 1989-90 = 100.0

Source: House Price Indexes, Australia (Cat. no. 6416.0).

WAGE COST INDEX(a)



(a) Total hourly rates of pay excluding bonuses.

Source: Wage Cost Index, Australia (Cat. no. 6345.0).

FEATURE ARTICLE

CLEANING SERVICES INDUSTRY IN THE ACT

INTRODUCTION

This article is based on results from an Australian Bureau of Statistics (ABS) survey of businesses in the cleaning services industry in respect of the 1998–99 financial year. Businesses involved in the cleaning services industry are classified to Class 7866 (Cleaning Services) of the Australian and New Zealand Standard Industrial Classification (ANZSIC), which consists of businesses mainly engaged in cleaning of windows, building interiors and related cleaning services. Businesses mainly involved in the cleaning of building exteriors or cleaning of carpets and curtains were excluded from the survey.

SIZE OF INDUSTRY

As at 30 June 1999, there were 80 businesses in the cleaning services industry in the ACT. Cleaning services businesses generated \$65 million total income during 1998–99 and employed 2,437 persons.

In 1998–1999, salaries and wages paid was \$36 million, comprising 3% of total salaries and wages paid in that industry in Australia. The average number of persons working per cleaning business operating in the ACT was 30 persons, the highest among all States and Territories and was higher than the national average of 16 persons per business.

INCOME

In 1998–99, the 80 cleaning businesses operating in the ACT accounted for 3% of industry income (compared to the ACT's proportion of the national population of 2%).

In the ACT the average income per business was \$808,800 in 1998–99, well above the national average of \$359,900 per business, and highest among all States and Territories. The State with the next highest average income per business was New South Wales (\$430,500 per business) while businesses operating in South Australia (\$259,100 per business) had the lowest average income per business.

STATES AND TERRITORIES COMPARISONS

	<i>Business at end June(a)</i>		<i>Employment at end June</i>		<i>Wages and salaries</i>		<i>Total income</i>	
			'000		'000		'000	
	<i>no.</i>	<i>no.</i>	<i>%</i>	<i>\$m</i>	<i>%</i>	<i>\$m</i>	<i>%</i>	
New South Wales	2 026	32 123	33.8	491.3	41.4	872.2	40.8	
Victoria	1 805	27 095	28.5	311.8	26.2	563.9	26.4	
Queensland	974	13 709	14.4	160.1	13.5	292.1	13.7	
South Australia	470	8 206	8.6	65.2	5.5	121.8	5.7	
Western Australia	466	9 199	9.7	95.2	8.0	168.0	7.9	
Tasmania	93	1 398	1.5	12.7	1.1	27.2	1.3	
Northern Territory	73	834	0.9	15.3	1.3	27.1	1.3	
Australian Capital Territory	80	2 437	2.6	36.2	3.0	64.7	3.0	
Total	5 938	95 001	100.0	1 188.0	100.0	2 137.0	100.0	

(a) Multi-state organisations are counted in each State in which they operate. Hence, the counts of business for States and Territories do not sum to the total for Australia.

Source: *Cleaning Services Industry, Australia, 1998–99* (Cat no. 8672.0).

Indicator	Unit	ACT			Aust.		
		% change from			% change from		
		Latest figure	Previous period	Same period previous year	Latest figure	Previous period	Same period previous year
POPULATION, VITALS AND LABOUR							
POPULATION, Dec qtr 2000	'000	312.4	0.3	0.8	19 277.1	0.3	1.2
Natural increase	no.	738	5.6	11.8	29 920	7.6	-5.8
Net migration	no.	100	1 150.0	133.0	28 058	-18.2	0.3
Total growth	no.	838	18.5	134.7	57 978	-6.6	-3.0
LABOUR FORCE							
Original series, May 2001							
Employed	'000	167.3	0.1	0.4	9 133.9	-0.2	1.1
Unemployed	'000	9.6	-2.0	3.2	671.7	0.4	7.6
Unemployment rate	%	5.4	-0.1	0.1	6.9	0.1	0.4
Participation rate	%	72.5	-0.1	-0.3	63.7	-0.2	0.1
Long-term unemployed, Apr 2001	no.	1 859	50.5	-4.7	159 861	-3.8	-14.8
Long-term unemployed as percentage of total unemployed, Apr 2001	%	19.0	5.1	-2.4	23.9	0.3	-4.6
Trend series, May 2001							
Employed	'000	167.2	-0.2	0.2	9 149.0	0.1	1.0
Unemployed	'000	9.5	4.4	10.5	669.1	1.4	8.3
Unemployment rate	%	5.4	0.2	0.5	6.8	0.1	0.4
Participation rate	%	72.5	—	-0.1	63.8	0.1	0.1
WAGE AND SALARY EARNERS, Dec qtr 2000							
Number employed, trend series							
Private sector	'000	85.0	1.4	5.3	5 913.7	0.7	3.9
Public sector	'000	69.3	-0.4	1.0	1 452.6	—	-0.2
Total	'000	154.3	0.6	3.3	7 366.3	0.5	3.1
Gross earnings, original series							
Private sector	\$m	658.2	4.0	17.0	52 217.8	5.1	7.2
Public sector	\$m	842.5	-15.8	3.2	15 925.1	-1.2	4.2
Total	\$m	1 500.7	-8.1	8.8	68 142.9	3.5	6.5
JOB VACANCIES, Feb qtr 2001	'000	3.1	-11.4	-20.5	95.5	-12.1	-15.3
INDUSTRIAL DISPUTES IN PROGRESS, Feb 2001							
Working days lost	'000	—	—	—	23.3	109.9	-63.4
Days lost per '000 employees (year ended Feb 2001)	no.	8.0	-11.1	-73.3	53.0	-8.6	-41.8
HOUSING AND BUILDING ACTIVITY							
HOUSING FINANCE, Apr 2001							
Secured commitments to individuals for							
Original series							
Construction of dwellings(a)	\$m	7.0	-12.5	n.p.	637.0	-5.9	-4.2
Purchase of new dwellings(a)	\$m	6.0	—	n.p.	235.0	-12.3	27.0
Purchase of established dwellings(b)	\$m	83.0	-5.7	-6.7	5 656.0	-8.6	28.6
Refinancing	\$m	13.0	-7.1	-7.1	1 336.0	-8.6	51.3
Total housing commitments	\$m	96.0	-5.0	-9.4	6 528.0	-8.5	24.3
Seasonally adjusted series							
Total housing commitments	\$m	108.0	17.4	-11.5	6 957.0	4.7	19.3
Trend series							
Total housing commitments	\$m	99.0	1.0	-15.4	6 691.0	2.8	12.4
Dwelling units financed	no.	734	0.3	-16.0	47 130	0.9	8.8
PRICE INDEX							
Established house price index, Mar qtr 2001	no.	150.5	2.8	7.5	153.9	2.2	6.9
BUILDING APPROVALS, Apr 2001							
Original series							
Dwelling units	no.	119	80.3	-8.5	9 046	-7.2	-26.3
Value of new residential	\$m	14.8	41.0	-15.4	1 231.5	-7.9	-16.9
Value of residential alterations and additions(c)	\$m	3.4	-34.6	-26.1	259.1	-16.6	-7.2
Value of non-residential	\$m	19.8	10.0	-13.5	1 076.5	-14.6	-11.2
Value of total building	\$m	38.0	12.8	-15.7	2 567.1	-11.7	-13.7
Trend series							
Dwelling units	no.	104	-7.1	-42.2	9 583	-1.1	-30.2

(a) Data cells have been suppressed for the month of April 2000 for confidentiality reasons.

(b) Includes refinancing.

(c) Includes conversion jobs.

Indicator	Unit	ACT			Aust.		
		% change from		Latest figure	% change from		Latest figure
		Latest figure	Previous period		Same period previous year	Previous period	
HOUSING AND BUILDING ACTIVITY <i>continued</i>							
BUILDING COMMENCEMENTS, Dec qtr 2000							
New houses	no.	307	30.6	-22.5	19 308	2.1	-35.6
Value of houses commenced	\$m	47.5	31.2	-9.2	2 737.6	2.5	-29.5
Value of non-residential building commenced	\$m	19.6	-30.5	-43.5	2 697.4	-9.6	-9.5
<i>Value of total commencements</i>	\$m	102.0	13.2	-29.9	7 543.1	-2.9	-17.2
ENGINEERING CONSTRUCTION, Dec qtr 2000							
Private sector							
Value of work commenced	\$m	10.8	-54.8	-46.0	3 116.5	33.4	2.2
Value of work done	\$m	21.6	-34.9	-23.4	2 687.1	-3.3	-18.2
Value of work yet to be done	\$m	26.1	-40.5	22.0	5 069.3	2.0	-2.8
Public sector							
Value of work done	\$m	20.4	-8.1	-14.6	1 660.6	-1.8	-13.4
PRICES, WAGES AND CONSUMER SPENDING							
CONSUMER PRICE INDEX, Mar qtr 2001(a)							
Food	no.	139.4	2.6	6.7	137.6	3.1	6.6
Housing(b)	no.	108.0	0.8	9.1	108.2	0.5	7.4
Transportation(b)	no.	138.8	-0.4	2.6	136.7	0.2	5.1
<i>All groups</i>	no.	132.2	0.8	5.8	132.7	1.1	6.0
AVERAGE WEEKLY EARNINGS, Feb 2001							
Full-time adult ordinary time earnings							
Original series							
Males	\$	1 017.0	-0.1	5.7	858.3	1.0	4.1
Females	\$	850.1	-0.7	5.0	728.4	1.3	5.4
Persons	\$	933.5	-0.6	4.4	810.6	1.0	4.6
Trend series							
Males	\$	1 020.4	1.1	5.9	857.2	0.7	4.2
Females	\$	850.7	0.5	4.0	727.2	1.2	5.3
Persons	\$	937.8	0.7	4.3	809.7	0.8	4.7
WAGE COST INDEX, Mar qtr 2001(c)							
Public sector	no.	110.0	0.8	3.5	112.6	1.3	3.8
Private sector	no.	111.6	0.8	4.1	111.4	0.9	3.6
<i>Total</i>	no.	110.6	0.7	3.8	111.7	1.0	3.7
RETAIL TURNOVER, Apr 2001							
Trend series							
Food retailing	\$m	101.0	0.9	14.9	5 353.9	1.1	9.8
Department stores	\$m	26.8	0.4	4.3	1 132.2	0.5	4.4
Hospitality and services	\$m	48.5	1.5	36.6	2 378.1	1.1	13.6
All other retailing	\$m	100.9	1.1	11.4	4 550.1	1.0	10.0
<i>Total</i>	\$m	277.2	1.0	15.6	13 414.3	1.0	10.0

(a) Base year: 1989-90 = 100.0.

(b) The 14th Series Australian Consumer Price Index was introduced September quarter 2000. Some changes include an updated commodity classification and weighting pattern and changes in composition of some groups. For more details of changes, refer to *Information Paper: Introduction of the 14th Series Australian Consumer Price Index* (Cat. no. 6456.0) released 29 September 2000.

(c) Base of each index is September quarter 1997 = 100.0.

Indicator	Unit	ACT			Aust.		
		% change from			% change from		
		Latest figure	Previous period	Same period previous year	Latest figure	Previous period	Same period previous year
TOURIST ACCOMMODATION, Dec qtr 2000							
Original series							
Room nights occupied	'000	271.9	3.6	4.5	10 543.0	0.9	1.2
Room occupancy rate	%	59.0	2.2	-1.1	58.8	0.4	-0.9
Guest nights	'000	459.2	3.5	8.1	18 775.4	1.0	1.5
Guest arrivals	'000	194.6	-3.6	-3.5	8 206.8	2.9	-1.3
Takings from accommodation	\$'000	28 963.0	0.8	12.2	1 239 908.0	-4.8	11.5
NEW MOTOR VEHICLE REGISTRATIONS, Apr 2001							
Original series	no.	1 049	-12.9	13.9	57 300	-15.3	13.9
Seasonally adjusted series	no.	1 219	3.7	8.9	65 471	3.5	8.2
Trend series	no.	1 177	0.1	5.2	63 667	-1.4	4.9
STATE ACCOUNTS, Mar qtr 2001							
Trend series (chain volume measure)(a)(b)							
General government final consumption expenditure	\$m	2 358	-1.3	-4.3	29 640	0.8	2.2
Household final consumption expenditure	\$m	1 797	1.1	4.7	95 936	1.1	3.2
Private gross fixed capital formation	\$m	326	-4.1	-21.1	28 026	-3.2	-11.2
Public gross fixed capital formation	\$m	209	-7.1	-13.6	6 735	0.5	-1.0
State final demand	\$m	4 696	-0.7	-3.1	160 322	0.2	—
GROSS STATE PRODUCT (trend, chain volume measures), 1999–2000(b)							
	\$m	12 669	4.9	..	620 963	4.3	..
PRIVATE NEW CAPITAL EXPENDITURE, Dec qtr 2000							
Original series (at current prices)							
Buildings and structures	\$m	48	60.0	108.7	2 829	9.0	-1.5
Equipment, plant and machinery	\$m	78	32.2	9.9	7 748	6.0	-1.3
Total	\$m	126	41.6	35.5	10 577	6.8	-1.4
Trend series (at current prices)							
Buildings and structures	\$m	41	24.2	95.2	2 625	-7.2	-4.9
Equipment, plant and machinery	\$m	69	-1.4	—	7 464	-0.5	-1.7
Total	\$m	110	6.8	22.2	10 089	-2.4	-2.5
BUSINESS EXPECTATIONS, TRADING PERFORMANCE, OPERATING INCOME							
Short term, expected change previous quarter, Jun qtr 2001	%	1.3	-0.2
Medium term, expected change previous year, Mar qtr 2002	%	3.3	1.7

(a) Quarterly state final demand details are released as a special data service (Cat. no. 5206.0.40.001).

(b) Reference year for chain volume measures is 1998–99.

Source: Australian Demographic Statistics (Cat. no. 3101.0); Australian National Accounts: Quarterly State Details (Cat. no. 5206.0.40.001); Average Weekly Earnings, States and Australia (Cat. no. 6302.0); Building Activity, Australia (Cat. no. 8752.0); Building Approvals, Australia (Cat. no. 8731.0); Consumer Price Index (Cat. no. 6401.0); Housing Finance, Australia (Cat. no. 5609.0); House Price Indexes (Cat. no. 6416.0); Industrial Disputes, Australia (Cat. no. 6321.0); Job Vacancies, Australia (Cat. no. 6354.0); Labour Force, Australia, Preliminary (Cat. no. 6202.0); New Motor Vehicle Registrations, Australia Preliminary (Cat. no. 9301.0); Private New Capital Expenditure, State Estimates (Cat. no. 5646.0); Retail Trade, Australia (Cat. no. 8501.0); Tourist Accommodation, Australia (Cat. no. 8635.0); Wage Cost Index, Australia (Cat. no. 6345.0).

Indicator	Unit	Latest period	NSW	Vic.	Qld	SA	WA	Tas.	NT	ACT	Aust.
POPULATION	'000	Dec qtr 00	6 502.6	4 797.4	3 597.2	1 500.5	1 897.4	470.1	196.3	312.4	19 277.1
LABOUR FORCE, trend series											
Employed persons	'000	May 01	3 060.4	2 315.9	1 697.2	674.7	939.2	199.4	94.8	167.2	9 149.0
Unemployment rate	%	May 01	5.7	6.3	9.0	7.3	7.2	8.5	6.0	5.4	6.8
WAGE AND SALARY EARNERS, trend series											
Private sector	'000	Dec qtr 00	1 935.1	1 627.9	1 050.1	423.7	619.1	118.9	53.9	85.0	5 913.7
Public sector	'000	Dec qtr 00	459.6	305.5	291.9	111.7	150.8	40.9	22.7	69.3	1 452.6
Total	'000	Dec qtr 00	2 394.7	1 933.4	1 342.0	535.4	769.9	159.8	76.6	154.3	7 366.3
STATE ACCOUNTS											
Gross state product (chain volume measures)(a)	\$m	1999-00	221 375	157 915	103 691	41 381	66 525	11 367	6 466	12 669	620 963
PRIVATE NEW CAPITAL EXPENDITURE											
Total (at current prices), trend series	\$m	Dec qtr 00	3 675	2 518	1 623	728	1 131	142	102	110	10 089
BUILDING APPROVALS											
Dwelling units approved, original series	no.	Apr 01	2 509	2 475	1 879	515	1 303	68	178	119	9 046
Dwelling units approved, trend series	no.	Apr 01	2 663	3 014	1 862	592	1 280	82	119	104	9 583
Value of non-residential building approved, original series	\$m	Apr 01	216.8	346.9	94.4	40.5	339.5	11.0	7.6	19.8	1 076.5
Value of all buildings approved, original series	\$m	Apr 01	661.3	794.9	385.1	107.6	524.7	21.8	33.8	38.0	2 567.1
ENGINEERING CONSTRUCTION, original series											
Value of engineering construction work done	\$m	Dec qtr 00	1 451.2	759.2	1 168.2	263.8	563.4	53.5	46.4	42.0	4 347.7
AVERAGE WEEKLY EARNINGS, trend series											
Full-time adult ordinary time earnings	\$	Feb 01	844.8	790.0	762.4	772.8	828.7	738.1	811.9	937.8	809.7
RETAIL TRADE TURNOVER, trend series	\$m	Apr 01	4 625.0	3 224.8	2 540.3	990.4	1 310.5	296.7	137.7	277.2	13 414.3
TOURIST ACCOMMODATION, original series											
Room nights occupied	'000	Dec qtr 00	3 498.0	1 698.9	2 919.7	551.4	1 016.0	269.5	317.7	271.9	10 543.0
Room occupancy rate	%	Dec qtr 00	59.7	59.4	60.6	56.8	57.2	53.6	55.4	59.0	58.8
NEW MOTOR VEHICLE REGISTRATIONS, trend series	no.	Apr 01	21 225	17 353	12 186	3 996	5 886	1 263	581	1 177	63 667
	Unit	Latest period	Syd.	Melb.	Bris.	Adel.	Perth	Hob.	Dar.	Canb.	Aust.
CONSUMER PRICE INDEX(b)											
Food	no.	Mar qtr 01	139.2	136.8	137.1	139.4	135.2	134.3	134.8	139.4	137.6
Housing	no.	Mar qtr 01	116.5	99.1	112.8	104.4	101.1	106.9	123.3	108.0	108.2
Transportation	no.	Mar qtr 01	138.4	136.2	134.5	137.0	136.0	131.4	131.9	138.8	136.7
All Groups	no.	Mar qtr 01	134.0	132.2	132.7	134.1	129.6	132.1	130.7	132.2	132.7
AVERAGE RETAIL PRICES											
Milk, supermarket sales (1 litre)	cents	Mar qtr 01	135	145	141	135	143	126	151	126	..
Bread, white loaf, sliced, supermarket sales (650g)(c)	cents	Mar qtr 01	247	256	234	232	235	251	236	245	..
Beef, rump steak (1kg)	cents	Mar qtr 01	1 318	1 201	1 164	1 289	1 252	1 154	1 219	1 337	..
Chicken, frozen (1kg)	cents	Mar qtr 01	373	377	338	384	369	370	412	384	..
Potatoes (1kg)	cents	Mar qtr 01	127	160	148	93	153	125	141	137	..
Coffee, instant (150g jar)	cents	Mar qtr 01	607	607	550	582	680	694	586	618	..
Scotch nip, public bar (30ml)	cents	Mar qtr 01	381	368	317	400	419	312	376	321	..
Private motoring petrol (1 litre)											
Super grade(d)	cents	Mar qtr 01	94.5	93.7	83.3	93.4	93.0	96.8	101.7	97.3	..
Unleaded	cents	Mar qtr 01	91.3	90.6	80.2	90.4	89.9	94.1	98.6	94.3	..

(a) Experimental series. Users are cautioned these estimates are derived indirectly by calculating a deflator from the expenditure components of the state series concerned. Therefore, in general, the sum of the state estimates does not equal the estimates for Australia. Reference year for chain volume measures is 1998-99.

(b) Base year: 1989-90 = 100.0. The 14th Series Australian Consumer Price Index was introduced September quarter 2000. Some changes include an updated commodity classification and weighting pattern and changes in composition of some groups. For more details of changes, refer to *Information Paper: Introduction of the 14th Series Australian Consumer Price Index* (Cat. no. 6456.0) released 29 September 2000.

(c) 680g in Hobart and Darwin.

(d) Includes lead replacement petrol where applicable.

Indicator	Latest period	ACT IN RELATION TO THE REST OF AUSTRALIA, PERCENTAGE CHANGES								
		NSW	Vic.	Qld	SA	WA	Tas.	NT	ACT	Aust.
POPULATION	Dec qtr 00	0.3	0.3	0.4	0.1	0.3	—	0.1	0.3	0.3
LABOUR FORCE , trend series										
Employed persons	May 01	0.2	—	0.1	0.1	-0.1	-0.3	0.4	-0.2	0.1
Unemployment rate	May 01	—	—	2.3	—	2.9	-1.2	1.7	0.2	0.1
WAGE AND SALARY EARNERS , trend series										
Private sector	Dec qtr 00	-1.1	1.8	1.4	-0.5	2.7	2.7	-2.0	1.4	0.7
Pubic sector	Dec qtr 00	-0.4	0.3	-0.3	-0.6	1.4	0.5	1.8	-0.4	—
Total	Dec qtr 00	-0.9	1.6	1.0	-0.5	2.4	2.1	-0.9	0.6	0.5
STATE ACCOUNTS										
Gross state product (chain volume measures)(a)	1999-00	3.7	4.6	6.3	3.5	4.6	1.1	—	4.9	4.3
PRIVATE NEW CAPITAL EXPENDITURE										
Total (at current prices), trend series	Dec qtr 00	-3.6	-3.3	-4.9	2.2	-0.9	1.4	-5.6	6.8	-2.4
BUILDING APPROVALS										
Dwelling units approved, original series	Apr 01	-0.4	-27.1	7.7	-18.9	10.1	-22.7	52.1	80.3	-7.2
Dwelling units approved, trend series	Apr 01	-3.2	-1.7	-0.3	1.0	4.1	-2.4	21.4	-7.1	-1.1
Value of non-residential building approved, original series	Apr 01	4.1	-30.8	-57.5	-71.5	141.5	35.8	-60.6	10.0	-14.6
Value of all buildings approved, original series	Apr 01	0.4	-31.2	-19.1	-51.8	71.8	0.5	5.6	12.8	-11.7
ENGINEERING CONSTRUCTION , original series										
Value of engineering construction work done	Dec qtr 00	-8.9	-1.1	-6.8	3.8	21.8	35.1	8.4	-24.1	-2.7
AVERAGE WEEKLY EARNINGS , trend series										
Full-time adult ordinary time earnings	Feb 01	0.5	0.9	1.1	1.7	1.0	-0.3	0.4	0.7	0.8
RETAIL TRADE TURNOVER , trend series	Apr 01	0.9	1.0	1.0	1.0	1.0	0.9	0.4	1.0	1.0
TOURIST ACCOMMODATION , original series										
Room nights occupied	Dec qtr 00	-1.3	5.6	-2.1	6.9	7.5	41.1	-20.4	3.6	0.9
Room occupancy rate	Dec qtr 00	—	5.7	-1.9	6.2	6.1	41.8	-20.2	2.2	0.4
NEW MOTOR VEHICLE REGISTRATIONS , trend series	Apr 01	-1.8	-2.0	-0.6	-1.5	-0.4	-1.6	1.0	0.1	-1.4
	Latest period									
CONSUMER PRICE INDEX(b)										
Food	Mar qtr 01	3.4	3.0	3.9	3.9	1.9	1.7	1.7	2.6	3.1
Housing	Mar qtr 01	0.3	0.8	0.1	0.5	-0.2	1.0	-0.5	0.8	0.5
Transportation	Mar qtr 01	0.3	0.4	0.3	-0.4	-0.2	0.8	0.6	-0.4	0.2
All Groups	Mar qtr 01	1.4	1.1	0.8	1.2	0.6	0.7	0.1	0.8	1.1
AVERAGE RETAIL PRICES										
Milk, carton, supermarket sales	Mar qtr 01	1.5	-0.7	—	1.5	0.7	—	-0.7	2.4	..
Bread, white loaf, sliced, supermarket sales	Mar qtr 01	2.9	2.8	4.5	5.5	4.4	5.9	2.6	4.7	..
Beef, rump steak	Mar qtr 01	5.0	6.4	4.4	0.4	0.2	3.4	2.0	4.1	..
Chicken, frozen	Mar qtr 01	1.9	14.2	15.0	23.5	1.7	0.3	-2.8	3.8	..
Potatoes	Mar qtr 01	5.8	1.3	16.5	14.8	0.7	10.6	-0.7	4.6	..
Coffee, instant (jar)	Mar qtr 01	1.7	3.9	-9.1	5.8	7.8	4.2	-3.8	0.5	..
Scotch nip, public bar	Mar qtr 01	1.6	0.5	1.6	0.5	1.2	3.0	0.8	1.6	..
Private motoring petrol										
Super grade(c)	Mar qtr 01	-4.2	-3.0	-3.7	-3.3	-4.1	-0.8	-4.1	-2.9	..
Unleaded	Mar qtr 01	-4.4	-3.2	-3.8	-3.3	-4.5	-1.1	-4.5	-2.9	..

(a) Experimental series. Users are cautioned these estimates are derived indirectly by calculating a deflator from the expenditure components of the state series concerned. Therefore, in general, the sum of the state estimates does not equal the estimates for Australia. Reference year for chain volume measures is 1998-99.

(b) Base year: 1989-90 = 100.0. The 14th Series Australian Consumer Price Index was introduced September quarter 2000. Some changes include an updated commodity classification and weighting pattern and changes in composition of some groups. For more details of changes, refer to *Information Paper: Introduction of the 14th Series Australian Consumer Price Index* (Cat. no. 6456.0) released 29 September 2000.

(c) Includes lead replacement petrol where applicable.

INDEX OF FEATURE ARTICLES PUBLISHED IN ACT BUSINESS INDICATORS

<i>Issue</i>	<i>Title</i>	<i>Page reference</i>
Jun 2001	Cleaning Services Industry in ACT	7
May 2001	Working Arrangements and Superannuation in the ACT	6
Apr 2001	Job Search Experience of Unemployed Persons in the ACT	7
Mar 2001	Population Growth in the ACT	6
Feb 2001	Labour Mobility in the ACT	7
Jan 2001	Child Care Industry in the ACT	7
Dec 2000	Cafes and Restaurants Industry in the ACT	6
Dec 2000	Legal Services Industry in the ACT	8
Nov 2000	Manufacturing Industry in the ACT	6
Oct 2000	Computing Services Industry 1998–99	6
Sep 2000	Motor Vehicle Use in the ACT	6
Aug 2000	Household Expenditure on Goods and Services in the ACT	6
Jul 2000	Small Business in the ACT	6
Jun 2000	Sports Attendance	7
Jun 2000	Attendance at Selected Cultural Venues	8
May 2000	Employee Earnings, Benefits and Trade Union Membership	7
Apr 2000	Emergency Services and Public Transport Usage in the ACT	8
Mar 2000	Forms of Employment	6
Feb 2000	Job Search Experience of Unemployed Persons	6
Jan 2000	Transition from Education to Work, May 1999	6
Dec 1999	Structure of the ACT Economy	6
Dec 1999	Participation in Sport and Physical Activities	7
Nov 1999	Crime and Safety in the ACT	6
Oct 1999	Labour Force Experience in the ACT	6
Sep 1999	Career Experience in the ACT	7
Sep 1999	Carers in the ACT	9
Aug 1999	Stock of Human Resources in Science and Technology	6
Jul 1999	Persons with a Disability in the ACT	6
Jun 1999	Participation in Education in the ACT	6
May 1999	Transition from Education to Work of Persons Aged 15–64 in the ACT	7
Apr 1999	Persons Not in the Labour Force in the ACT	6
Mar 1999	Education and Labour Force Status of the ACT's Young People	6
Feb 1999	Income and Living Standards in the ACT	6
Jan 1999	Education and Training Experience of ACT Resident	6
Dec 1998	Families and Labour Force Status in the ACT	6
Nov 1998	Retrenchment and Redundancy in the ACT	6
Nov 1998	Retail Turnover in the ACT	9
Oct 1998	Research and Experimental Development in the ACT	6
Sep 1998	Labour Force Mobility in the ACT	6
Sep 1998	Income Distribution in the ACT	8
Aug 1998	ACT Investors in Rental Dwellings	6
Jul 1998	Retirement and Retirement Intentions	6
Jun 1998	Profile of Small Business in the ACT	7
May 1998	Participation in Education in the ACT	7
Apr 1998	Retail Turnover in the ACT by Type of Retailing and Shopping Centre	7
Apr 1998	Shopping Preferences in the ACT	7
Mar 1998	Characteristics of Small Business	8
Feb 1998	Weekly Earnings of Employees in the ACT	8

FOR MORE INFORMATION...

- INTERNET* **www.abs.gov.au** the ABS web site is the best place to start for access to summary data from our latest publications, information about the ABS, advice about upcoming releases, our catalogue, and Australia Now—a statistical profile.
- LIBRARY* A range of ABS publications is available from public and tertiary libraries Australia-wide. Contact your nearest library to determine whether it has the ABS statistics you require, or visit our web site for a list of libraries.
- CPI INFOLINE* For current and historical Consumer Price Index data, call 1902 981 074 (call cost 77c per minute).
- DIAL-A-STATISTIC* For the latest figures for National Accounts, Balance of Payments, Labour Force, Average Weekly Earnings, Estimated Resident Population and the Consumer Price Index call 1900 986 400 (call cost 77c per minute).

INFORMATION SERVICE

Data which have been published and can be provided within five minutes are free of charge. Our information consultants can also help you to access the full range of ABS information—ABS user-pays services can be tailored to your needs, time frame and budget. Publications may be purchased. Specialists are on hand to help you with analytical or methodological advice.

- PHONE* **1300 135 070**
- EMAIL* **client.services@abs.gov.au**
- FAX* 1300 135 211
- POST* Client Services, ABS, GPO Box 796, Sydney 1041

WHY NOT SUBSCRIBE?

ABS subscription services provide regular, convenient and prompt deliveries of ABS publications and products as they are released. Email delivery of monthly and quarterly publications is available.

- PHONE* 1300 366 323
- EMAIL* subscriptions@abs.gov.au
- FAX* 03 9615 7848
- POST* Subscription Services, ABS, GPO Box 2796Y, Melbourne 3001



2130380006014
ISSN 1320-808X

RRP \$17.50